

# TST-HGND07414STS01 Thermostat Manual

## TECHNICAL DATA:

Temperature Range: 10~30°C adjustable

Switching Differential: Approx.±1°C

Operating Temperature: 0~45°C

Operating Humidity: 5~90%RH

Storage Temperature: -10~60°C

Operating Voltage: AC220V±10%, 50/60Hz

Switch current rating: 1(0.5) A

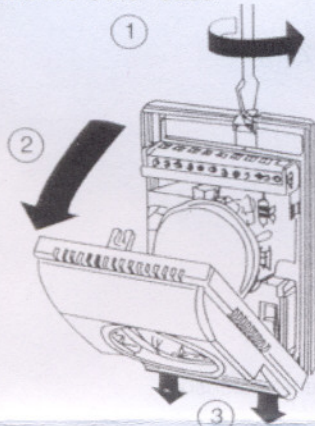
Wiring Diameter: 0.5~2.5 mm<sup>2</sup>

Dimension: 130×85×43 mm (H×W×D)

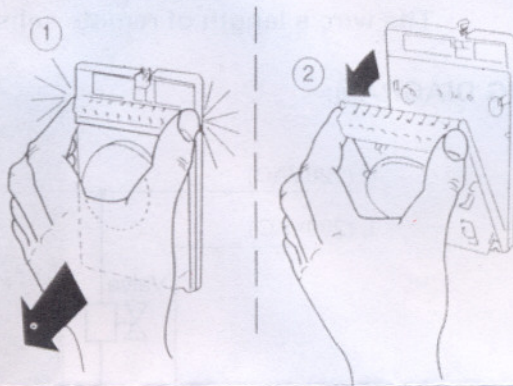
Hole pitch: 60 mm

## MOUNTING INSTRUCTION:

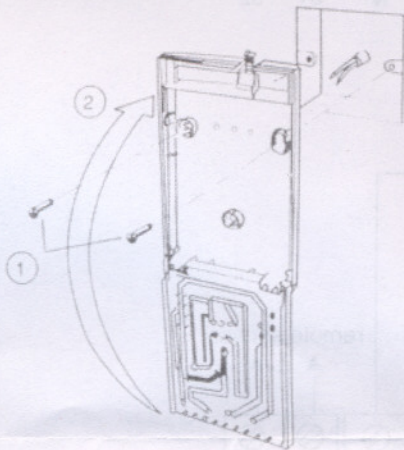
### (1) Dismantle Outer Case



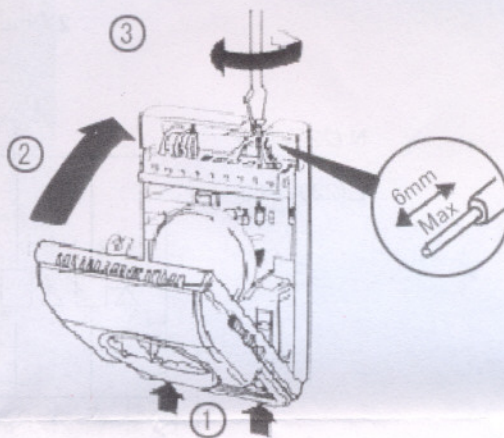
### (2) Dismantle Middle Case



### (3) Install Back Base



### (4) Wire Connection



## OPERATION INSTRUCTION:

There is temperature adjusting knob with scale mark on the front panel. There are also the Fan Speed Switch with HIGH-MED-LOW and the System Switch with HEAT-OFF-COOL on the front panel. The operation steps as follows:

1. Turn On/Off: Slide the switch to HEAT when you want heating; slide the switch to COOL when you want cooling. Set the switch to OFF, the thermostat will be turned off.
2. Set point: turn the adjusting knob to the desired temperature.
3. Fan Speed Selection: slide the fan speed switch to any positions of HIGH-MED-LOW you wanted.



## SWITCH INSTRUCTION:

The user could configure the system application by switch.

**SW1:** ON: 4-Pipe configuration.

OFF: 2-Pipe configuration.

**SW2:** ON: When the temperature reaches the set-point,

Valve will be close and fan keep on running.

OFF: When the temperature reaches the set-point,

Valve and Fan will be closed together.

**SW3:** ON: Select outdoor sensor.

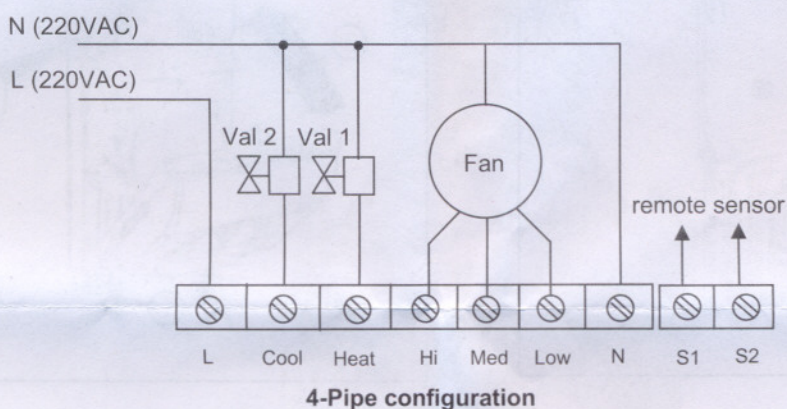
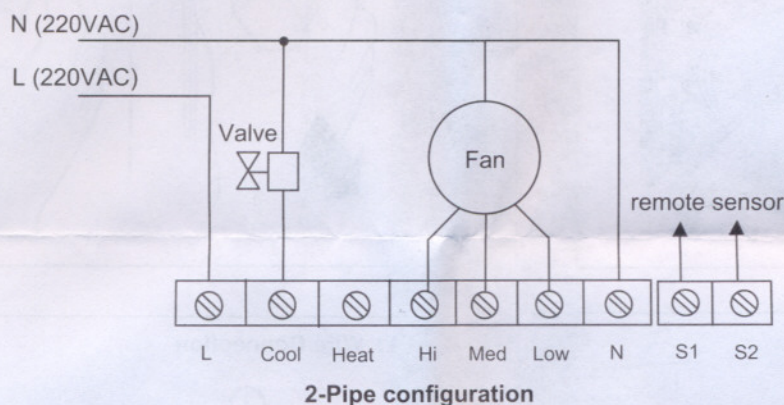
OFF: Select indoor sensor.

	1	2	3	4
ON			■	
OFF	■	■		

**Attention:** cut off the power before change model,

The wire's length of remote sensor is limited within 20m.

## WIRING DIAGRAM:



**Note:** Be sure to connect all the wires as per the wiring diagrams and keep it away from water, mud and other material so as to prevent the unit being spoiled!