



Flamco

3

Flamco

Accessories for heating systems



PRESCOR



PRESCOR S



FLEXBALANCE



FLEXFAST



FLEXCONSOLE



Flamco

EDITION EXP
2009

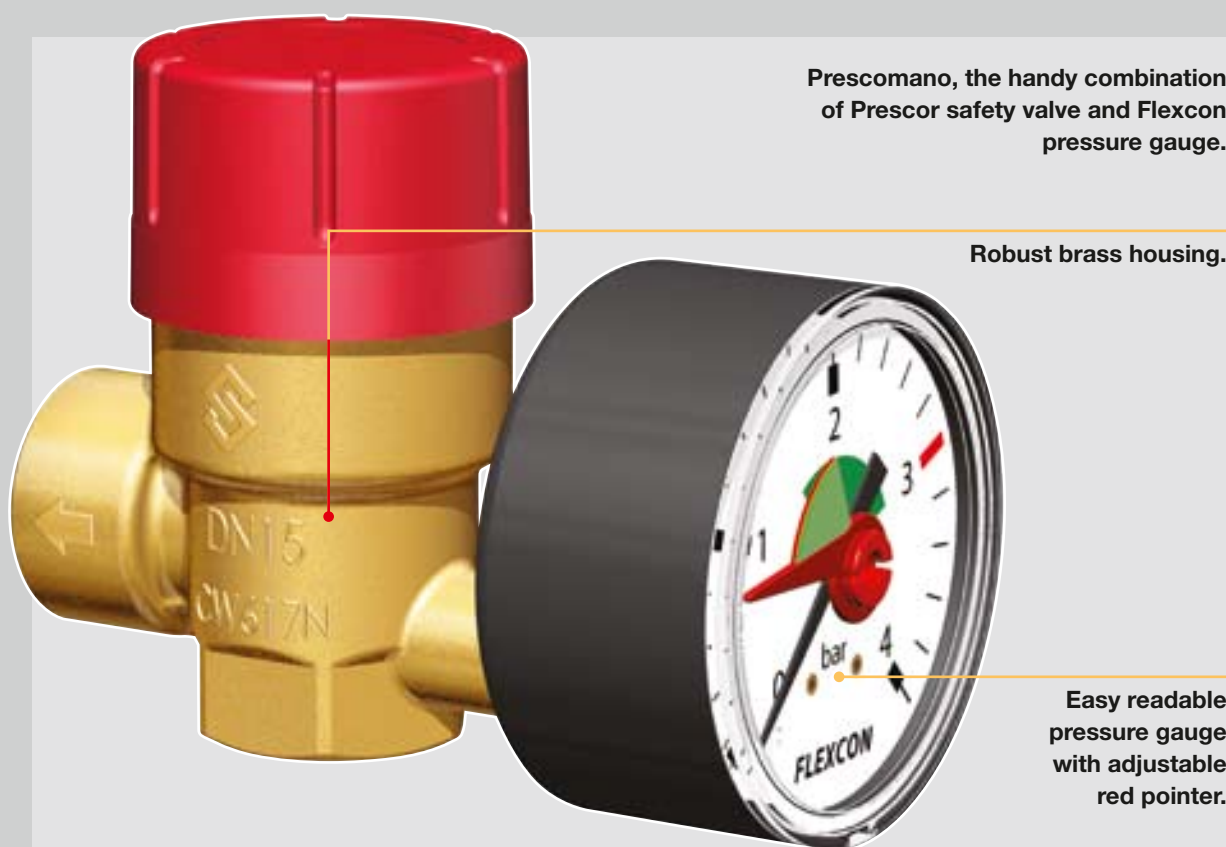


Flamco A complete programme for the protection of

Prescor safety valves are used to maintain safe pressure levels in closed central heating/chilled water systems. Choosing a Prescor safety valve can be done by ensuring the nominal boiler capacity. All safety valves made by Flamco bear the CE mark. The set pressure and the maximum capacity for which the valve is suitable are marked on the valve.



PRESCOMANO



Prescor safety valves

A complete programme of 1/2" - 2" valves with standard set pressure.

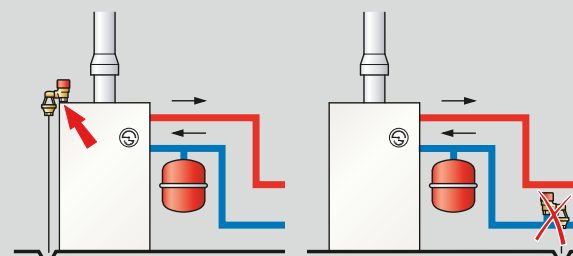


CE PRESCOR® SAFETY - THE ULTIMATE SAFETY

PRESCOR® ADVANTAGES

- ◆ High-quality material and construction are your guarantee of reliable function when you need it most.
- ◆ The pop-effect means that the valve opens automatically when pressure rises quickly. Excess energy is then expelled as steam.
- ◆ Valves and materials can withstand temperatures up to 140 °C.
- ◆ All valves are individually tested in the factory.

Can be fitted on, or as close as possible to, the boiler in the supply line. Remember - never position a stop cock between the boiler and the valve!



Tables with types and technical information: pages 3.13 - 3.14.



PRESCOR 1/2"



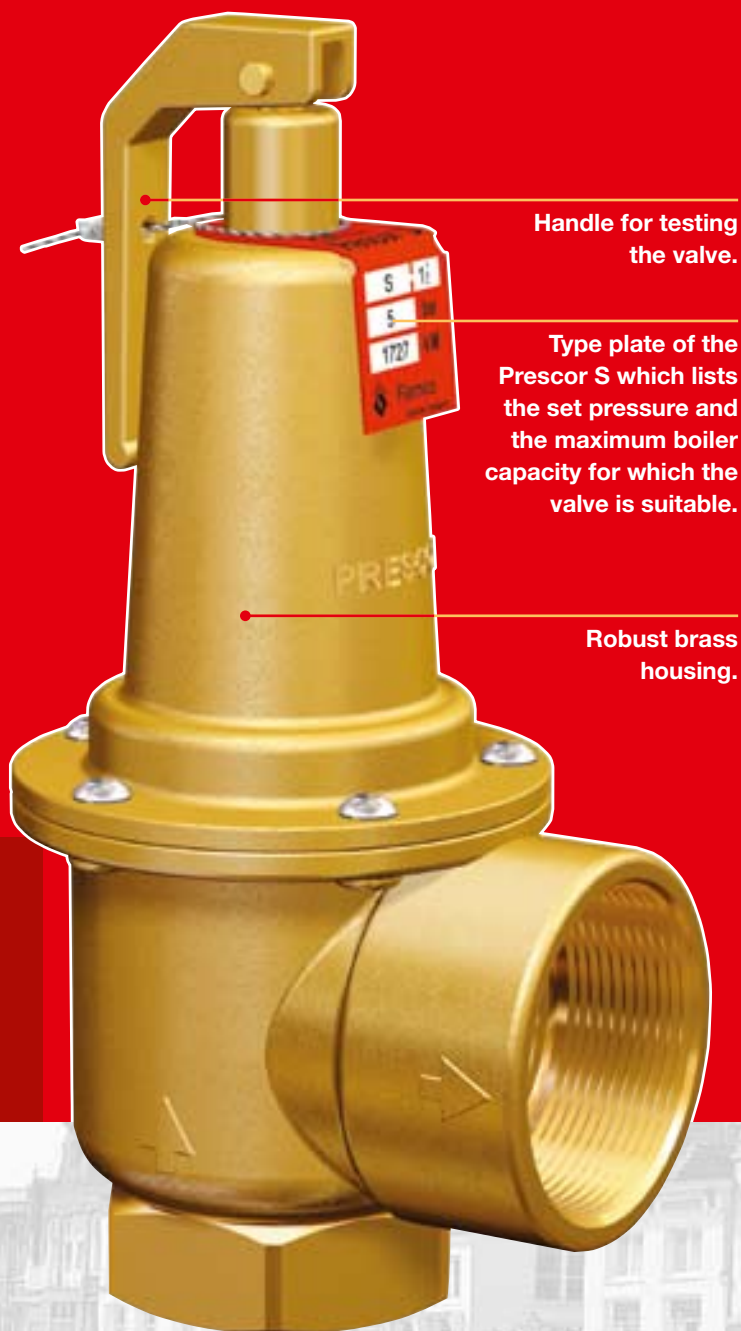
PRESCOR 3/4"



PRESCOR S



FLAMCO TRD



Prescor S safety valves

Prescor S safety valves are suitable for sealed central heating and chilled water systems with a capacity of up to 5590 kW at a standard set pressure from 2 up to 10 bar. These valves, with their 1 1/4" – 2" fittings form the ideal protection for larger systems.

Important:

- Never block a safety valve's discharge opening.
- Do not use the safety valve to drain, bleed or vent the system.
- What to do: Always fit a funnel or a discharge pipe of the accompanying diameter (which matches the discharge opening of the valve).

Flamco flanged safety valves (TRD approved)

For protection against excess pressure in heat-generation systems (DIN EN 12828-compliant) with a maximum permitted temperature of 120 °C.



Flamco offers the best in safety valves for each system application

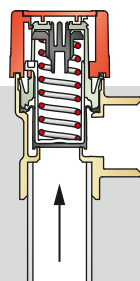
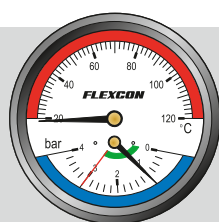


Flamco Expert construction and high-quality materials

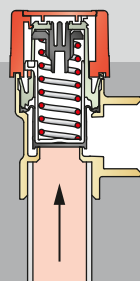
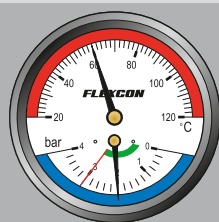
The above, in addition to the craftsmanship of the fitter, makes each Prescor safety valve an absolute top product. Optimum safety for each system. The regular Prescor valves are sufficient in systems with a capacity of up to 858 kW. In systems with greater capacity, up to 5590 kW, you should choose the Prescor S. Choose Prescor and you choose quality!



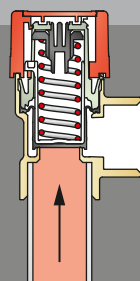
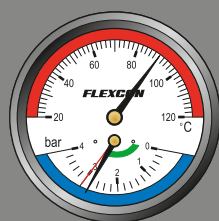
PRESCOR 3/4"



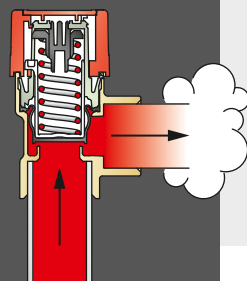
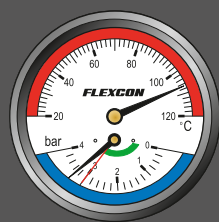
◆ The system when cold.



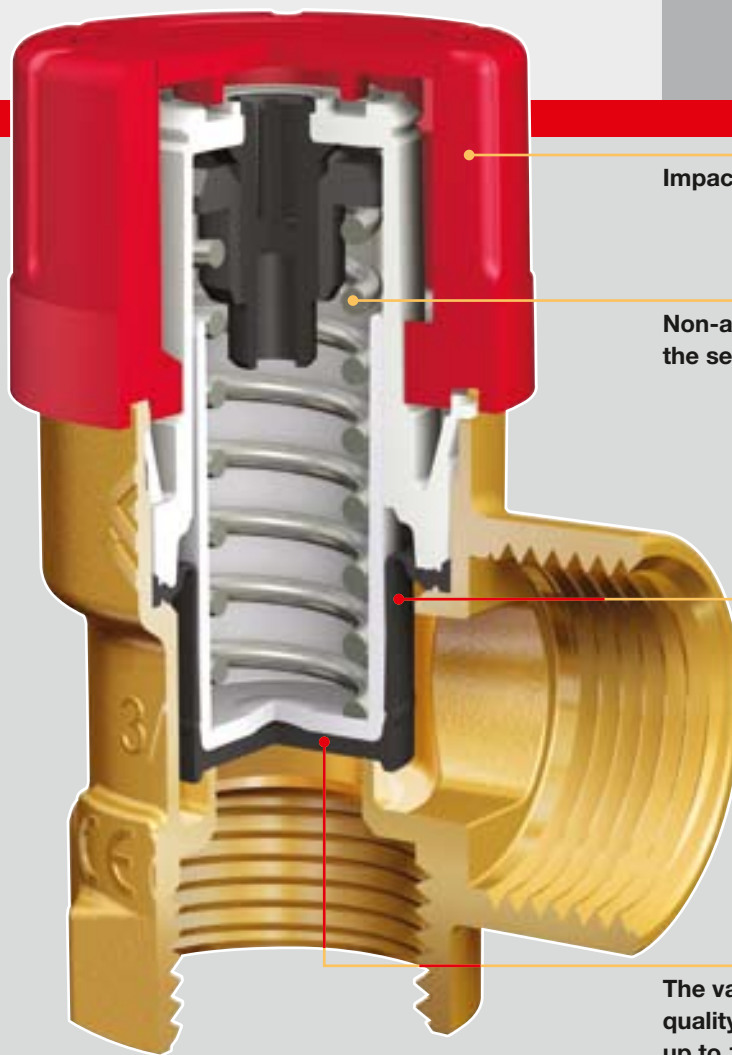
◆ When the system heats up, the water inside will expand.



◆ The pressure in the system rises.



◆ The Prescor valve opens.
The excess pressure is discharged.



Impact-resistant plastic button.

Non-ageing spring steel prevents the set pressure from dropping.

The diaphragm prevents moisture and dirt getting into the moving parts during blowing-off.

The valve seal is made of high-quality rubber and is heat-resistant up to 140 °C. The degree of hardness of the rubber is adjusted to the valve's set pressure. These properties prevent the valve from sticking to its seat.

Prescor safety valves carry an indication of the maximum boiler capacity for which they are intended. If several boilers or heat generators are used, and when these can be blocked separately, a Prescor should be fitted to every heat generator. To be able to observe when the valve is operated, a funnel is recommended in all cases, and is, in certain cases, obligatory. The applicable local regulations concerning the position of the valve, the execution of exhaust pipes, positioning of funnels etc. should be carefully followed.

form the basis of Prescor® quality

All Prescor safety valves are permanently factory-preset to the set opening pressure marked on them. Flamco philosophy is that no one should be able to mess around with the safety device of your expensive boiler/cooling machine.



PRESCOR S

Handle for testing the valve.

Spring for pre-setting the pressure.
This setting is locked.

Brass housing.

Valve with seal of special rubber.

Diaphragm protecting the spring
and preventing leakage of water
at the spindle.

Prescor S valves

Several Prescor S safety valves may be fitted to a system to meet its usable capacity, if permitted by the prevailing rules and regulations. The safety valve must be fitted to the system when it is not under pressure. When commissioning the system, we recommend flushing the pipe work first. As is the case with bleeding, this must never be done with the Prescor S safety valve.

Brass valve seat.

PRESCOR ADVANTAGES

- ◆ An extensive programme which always has the right valve for you.
- ◆ Guaranteed quality means you needn't worry about safety.

- ◆ All valves are individually tested in our factory.
- ◆ Valves and materials can withstand temperatures up to 140 °C.



Flamco The solution for hydraulic imbalance in cen

Increasingly, central heating installations are fitted with several boilers. This means that, depending on the need for heat, an ancillary boiler can be switched on or off. Additionally, there are often several sub-circuits, each fitted with its own pump. Because of the continuous fluctuation in the heating demand and supply, there is a great chance of such systems suffering hydraulic imbalance, which leads to bad heat output, the pumps being overloaded, and a system which is difficult to regulate. By using a FlexBalance Plus or FlexBalance hydraulic separator, this problem can be avoided. The output of the installation is clearly improved by this.



FLEXBALANCE F
WITH FLANGE CONNECTIONS

Cone-shaped air chamber,
reducing to a minimum the
chance of polluting the valve.

Supply connections.

Steel housing.

Return connections.

Drainage tap for removing
sediment that is heavier
than water.

The FlexBalance (Plus) must be placed between the primary and secondary circuits. This is, in addition, the perfect place for air and dirt separation. Because of the high temperature of the water flowing through the supply connections, this is the best possible point for air separation. Dirt separation takes place in the return connection, behind the radiators, and immediately before the boiler, thus protecting it from dirt.

The use of FlexBalance (Plus) hydraulic separators prevents hydraulic imbalance. This means:

- No more overloaded pumps and thus less wear with resulting damage.
- Better and more accurate regulation of the system is possible.
- Considerably improved warmth transference and thus a higher output by the system.

ON THE FLAMCO CD YOU WILL FIND:

- ◆ This brochure as PDF file.
- ◆ An animation film about the operation of the FlexBalance.
- ◆ Mounting instructions.
- ◆ DWF files.
- ◆ CAD symbols.

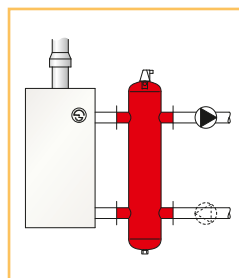


FLEXBALANCE ADVANTAGES

- ◆ For use in heating and cooling systems.
- ◆ Integrated air separation.
- ◆ Hydraulic separation between primary and secondary circuits. The use of a perforated sheet promotes the balancing functions of the FlexBalance.
- ◆ Use with several boilers – whether or not in a cascade design – proves no problem in the system
- ◆ The control system is not influenced by other circuits.
- ◆ Wide model range, with welding, flange and threaded connections.

Hydraulic disconnection

A FlexBalance (Plus) hydraulic separator is connected to the output and return pipes of the primary circuit and to the output and return pipes of the secondary circuit. Depending on the flow in both sub-circuits, these are balanced in the hydraulic separator.



Tables with types and technical information FlexBalance (Plus) pages 3.16 – 3.17.

tral heating installations



FLEXBALANCE R
WITH THREADED PIPE
CONNECTIONS



FLEXBALANCE S
WITH WELDING CONNECTIONS



FLEXBALANCE PLUS F
WITH FLANGE CONNECTIONS



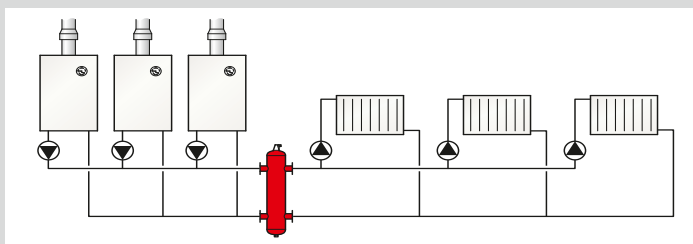
FLEXBALANCE PLUS R
WITH THREADED PIPE
CONNECTIONS



FLEXBALANCE PLUS S
WITH WELDING CONNECTIONS

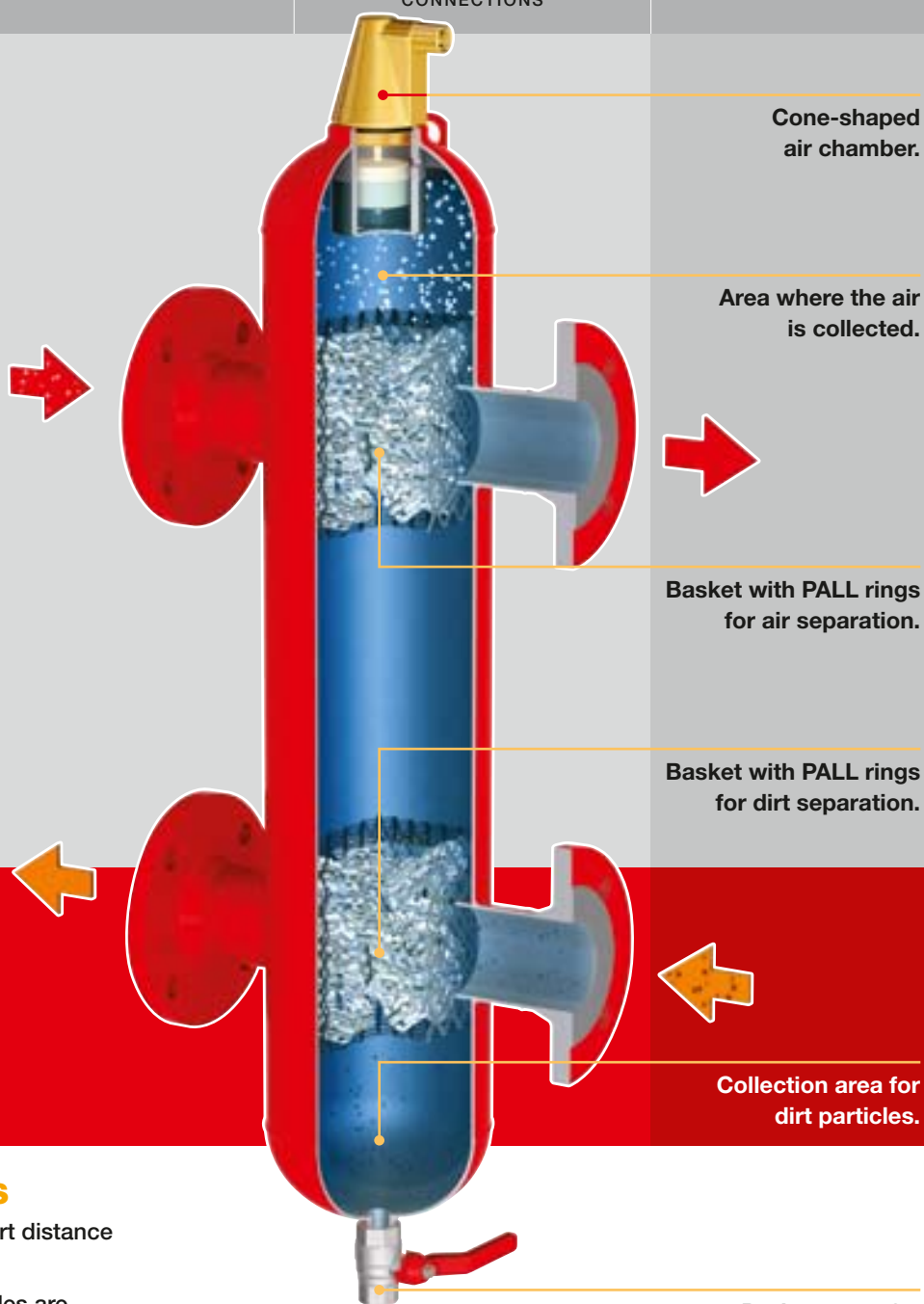
Schematic illustration of a system with several boilers and pumps

By installing a FlexBalance (Plus) hydraulic separator, the primary and secondary circuits are disconnected and a balance is created between the various flow speeds.



In an ideal situation, in which the flow in the primary circuit is equal to the flow in the secondary circuit, the hydraulic separator does not operate. A situation can, however, arise in which the flow in the primary circuit is greater or smaller than the flow in the secondary circuit. Then the surplus is fed back into the other circuit via the FlexBalance (Plus).

This means that in all situations, the flow in the primary circuit is independent of the flow in the secondary circuit. In this way, a hydraulic balance is brought to the heating system. The flows in both sub-circuits are not influenced in any way.



Cone-shaped
air chamber.

Area where the air
is collected.

Basket with PALL rings
for air separation.

Basket with PALL rings
for dirt separation.

Collection area for
dirt particles.

Drainage tap for
removing sediment
that is heavier
than water.

EXTRA FLEXBALANCE PLUS ADVANTAGES

- ◆ Thanks to the use of PALL rings, FlexBalance Plus has a short distance between supply and return connections.
- ◆ Even air contained in the water and the smallest micro-bubbles are separated as thoroughly as possible.
- ◆ The lower flow-rate caused by the PALL rings prevents heat exchange between the cold return water and the hot supply water, and thus a considerably greater thermal yield is achieved than with other balance bottles on the market.
- ◆ Integrated air and dirt separator using patented PALL ring technology.



Flamco A wide range of accessories

In addition to an extensive range of safety valves for systems of all sizes, Flamco can also offer you a series of other products. Their aim is not only the safety of your system; they are also geared to making your job easier.

- ◆ (THERMO) PRESSURE GAUGES.
- ◆ FILLING GROUP.



FLEXCON
THERMO-PRESSURE GAUGE



FLEXCON PRESSURE GAUGE

Flexcon thermo-pressure gauge

For simultaneously reading the operating pressure and temperature.

Black moving pointer = current operating pressure.

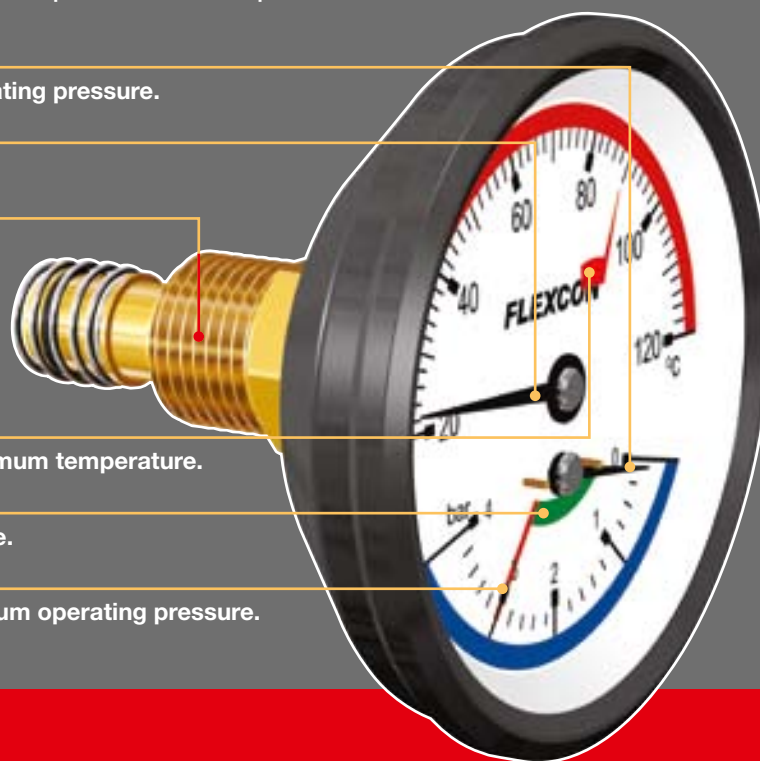
Temperature indicator.

Immersion pipe.

Movable red pointer shows the maximum temperature.

Green zone = safe operating pressure.

Red stripe at 3 bar shows the maximum operating pressure.

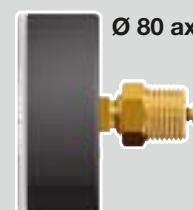


Flexcon pressure gauge

Flexcon pressure gauges, Ø 80, may be fitted/changed without draining the system owing to the shut-off valve.



Flexcon pressure
gauge, Ø 80 rad.

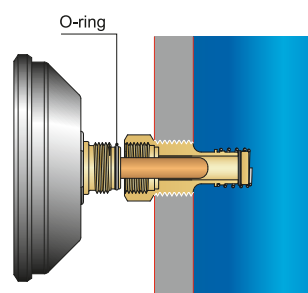


Ø 80 ax.

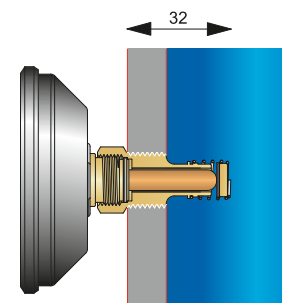
FLAMCO: FLEXIBLE WITH USEFUL ACCESSORIES!

USE AND FITTING

- ◆ The Flexcon thermo-pressure gauge is supplied complete with immersion pipe.
- ◆ Easy to fit – all you need is a suitable socket spanner for the hexagon-head bolt on the connection.
- ◆ After fitting, water flows into the immersion pipe.



Before screwing in, the shut-off valve closes off the immersion pipe.



Once properly screwed in, the immersion pipe must be rinsed with water.

Tables with types and technical information: page 3.15.



FLAMCO WMS 800



MANOFILLER



PRESSURE-REDUCING VALVE

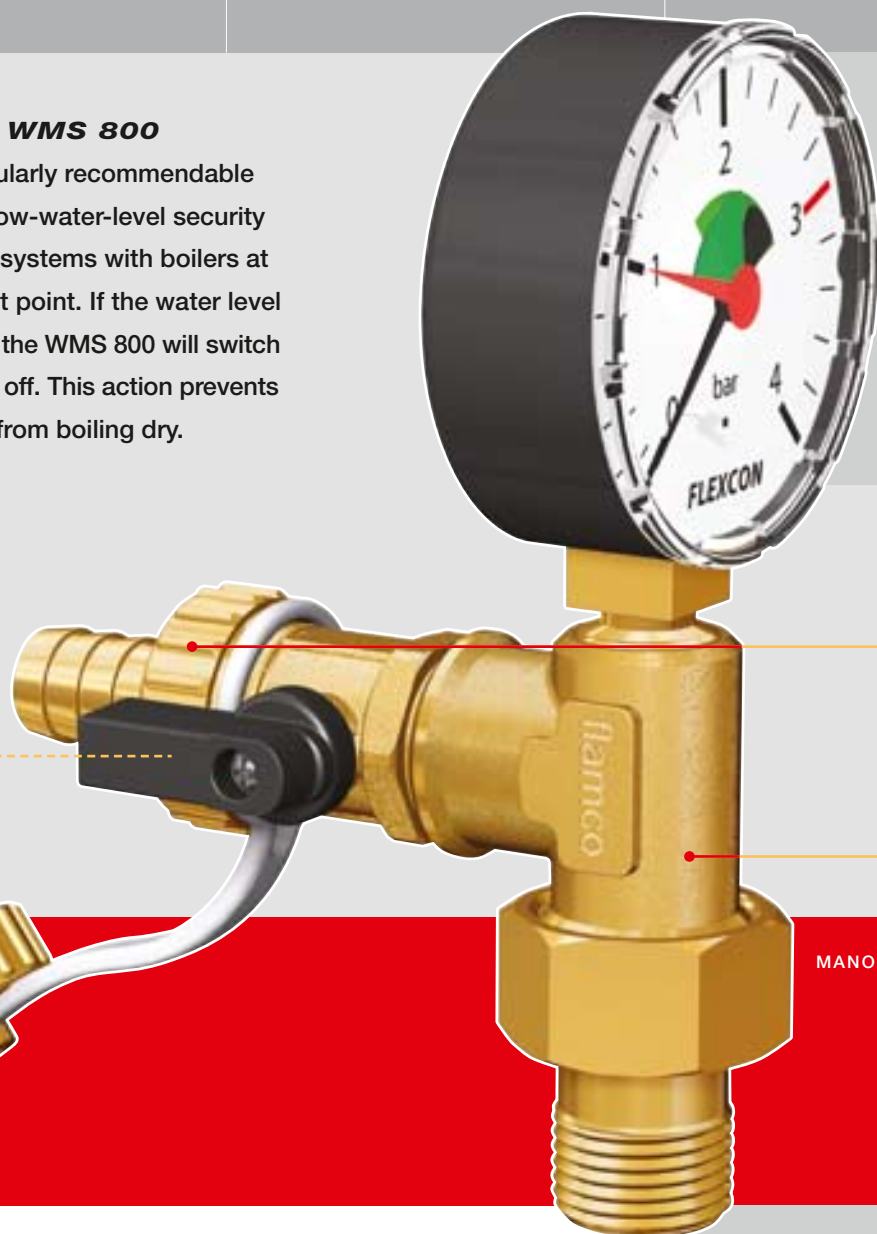
Flamco pressure-reducing valves

A comprehensive range of valves specially designed for building services applications. Both adjustable (by screw with locking nut) and factory pre-setting is available for all sizes ($\frac{1}{2}$ " – 2"). Integral stainless steel strainers are fitted and all larger valves have a pressure gauge with union. The gauge may be mounted on either side. Maximum inlet pressure 16 bar. Maximum pressure reduction ratio: 10:1. WRC listed (except $\frac{1}{2}$ " RFM).

Compact valves with excellent performance!

Flamco WMS 800

It is particularly recommendable to fit this low-water-level security in heating systems with boilers at the highest point. If the water level is too low, the WMS 800 will switch the burner off. This action prevents the boiler from boiling dry.



Ball valve for filling and draining, with hose coupling and shut-off cap. The filling and draining cock can be opened and closed by using the rear of the shut-off cap.

T-piece with $\frac{1}{2}$ " coupling.

MANOFILLER

Manofiller filling group

The Manofiller filling group is suitable for fitting to one of the loose connection points of a radiator. The best use for a Manofiller is in situations in which the pressure gauge is fitted to or next to the boiler/cooling machine, while the system is filled somewhere else: perhaps in the bathroom. It is possible to fit it in any position.

Test manometer

Using the Flamco test manometer, the pre-pressure of Flexcon and Airfix expansion vessels can be easily checked. The pressure range is from 0.4 to 6.8 bar. The code number is 27907.





Flamco With these products, you can mount, disassemble

A Flexcon vessel can, of course, be attached directly to a pipeline. However, for a better solution, you can turn to the Flexfast isolating union, Flexconsoles or Flexcon connection sets shown here. Their use greatly facilitates reading the pressure or disconnecting the vessel without draining the system or releasing the pressure.

- ◆ ISOLATING UNION.
- ◆ CONNECTION SETS.



FLEXFAST 3/4"



FLEXCONSOLE PLUS



Flexconsole Plus

An exceptionally complete product in the same red colour as the Flexcon vessels. The vessels are to be mounted vertically, hanging from the mains-water connection. Product includes:

- ◆ Flexcon pressure gauge.
- ◆ Flexvent floatvent,
- ◆ Flamco safety valve,
- ◆ Flexfast isolating union, mounting set.

Flexconsole

This model is supplied with a 1/2" radiator stop including manual venting device.



ADVANTAGES OF FLEXFAST

- ◆ Finished with 3/4" internal thread and 3/4" external thread.
- ◆ Easy to mount with the correct tools before hand-tightening the individual components.
- ◆ Considerable time saving when performing maintenance on your Flexcon vessel.

The Flexfast isolating union makes it possible to inspect the pre-pressure of Flexcon vessels with capacity of up to 25 litres quickly and efficiently, or to replace the vessel without the system losing pressure or having to be drained.

Simple and inspect Flexcon expansion tanks quickly!



FLEXCONTROL



FLEXCON CONNECTION SET 1/2"



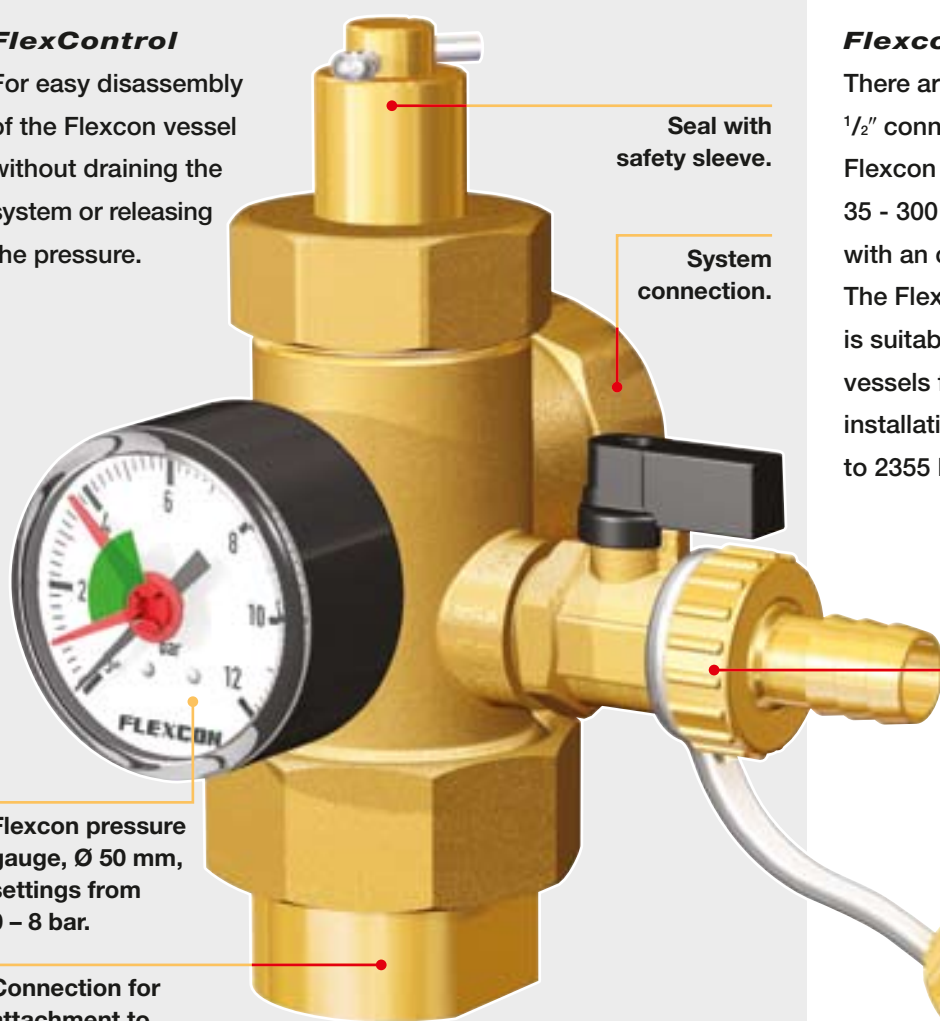
FLEXCON CONNECTION SET 1"

Connection set

A connection set consists of a swivel and a frog for connecting a Flexcon expansion vessel of 35 to 50 litres (connection set with 3/4" connection, code number 27941) or a Flexcon expansion vessel of 80 to 200 litres (connection set with 1" connection, code number 27942).

FlexControl

For easy disassembly of the Flexcon vessel without draining the system or releasing the pressure.



Seal with safety sleeve.

System connection.

Flexcon pressure gauge, Ø 50 mm, settings from 0 – 8 bar.

Connection for attachment to the vessel.

Flexcon connection sets

There are two types. The Flexcon 1/2" connection set is suitable for Flexcon expansion vessels from 35 - 300 litres and installations with an output of up to 660 kW. The Flexcon 10 connection set is suitable for Flexcon expansion vessels from 110 - 1000 litres and installations with an output of up to 2355 kW.



Ball cock for filling and draining with hose coupling and shut-off cap.

Flexcon GVA 90

A handy extension piece with a 90° angle. The Flexcon GVA 90 must be screwed onto the valve of the medium-sized Flexcon vessels of 110-1000 litres. This extension piece makes the valve more easily accessible. Code number 27952.



Flexcon connection sets consist of components such as a drain cock and shut-off valve. Once the valve is closed, the vessel may be drained and then inspected or replaced. The Flexcon 1/2" connection set is fitted on the expansion pipe, whereas the 1" version is fitted to the water nipple of the Flexcon vessel.

Flamco develops, produces and sells an exceptionally wide range of accessories for heating and other systems. You can rely on Flamco.



Flamco

The possibilities offered by Flamco are legion. In addition to the products shown on the previous pages, you can also choose products shown on this page. Flamco is the only company in its class that can deliver a total range of products which are precisely in harmony with each other and are attuned to practical situations.



PRESSURE SAFETY



FLEXCON
DISASSEMBLY SPANNER DT



FLAMCO FUNNEL



FLEXCON
MB 2 VESSEL SUPPORT

Together with each Prescor valve belongs a Flamco funnel

The Flamco funnel keeps the connection open to the atmosphere under all conditions; if there is a blockage or if the supply pipe is frozen, an open connection is vital to safety. Flamco funnels can be rotated in relation to the elbow joint, which means that they can be mounted easily.



Installation

The Flexcon DT disassembly spanner easily unscrews a stuck Flexcon vessel. Flexcon vessels have a long service life. When they, eventually, have to be replaced, they may be so tight that it seems impossible to remove them. Help is at hand, in the shape of the Flexcon disassembly spanner - the best way to release such Flexcon vessels.



Pressure-safety

System high or low pressure cut out switch. Safety device for wiring into boiler controls. One switch for each operation.



Flexcon MB 2 vessel support

1. The Flexcon MB 2 vessel support is fitted to the wall with the threaded dowel pins and plugs supplied.
2. The Flexcon MB 2 has a slot in which the vessel's clamp fits exactly. The action of screwing in the two pins clamps the tank in place.
3. The Flexcon MB 2 is suitable for fixing Flexcon and Airfix vessels with capacities of up to 25 litres to the wall.



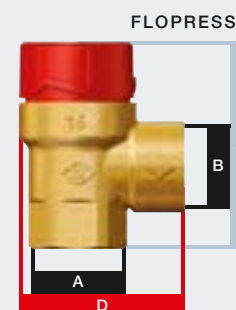
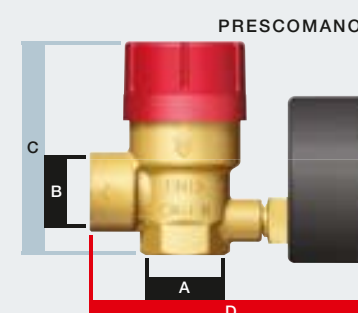
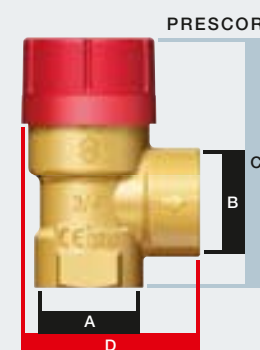
Tables with types and technical information: page 3.19.



- Should the pressure in the installation rise too high, the Prescor safety valve will ensure that the excess water and steam are discharged safely.
- Prescor safety valves for sealed central heating and chilled water (cooling) systems.
- Pre-set pressure, non adjustable, membrane seal, quick release.
- The Prescomano is a combination of a Prescor safety valve and a Flexcon pressure gauge.
- The PrescorPlus T 1/2" is a Prescor safety valve with an extra integrated T-piece clamp (22 mm) for direct fixing in a 22 mm pipe.

Models and dimensions Prescor safety valves

| Type | Set pressure in bar | Blow-off capacity in kW | Connections | | Dimensions in mm | | Code number |
|---------------|---------------------|-------------------------|-------------|-------------|------------------|----|-------------|
| | | | A | B | C | D | |
| Prescor 1/2 | 1.5 | 85 | 1/2" int. | 1/2" int. | 69 | 48 | 27608 |
| Prescor 1/2 | 3.0 | 125 | 1/2" int. | 1/2" int. | 69 | 48 | 27665 |
| Prescor 1/2 | 4.0 | 155 | 1/2" int. | 1/2" int. | 69 | 48 | 27606 |
| Prescor 1/2 M | 3.0 | 125 | 1/2" ext. | 1/2" int. | 82 | 48 | 27675 |
| Prescor 3/4 | 1.5 | 115 | 3/4" int. | 3/4" int. | 71 | 50 | 27023 |
| Prescor 3/4 | 2.5 | 150 | 3/4" int. | 3/4" int. | 71 | 50 | 27026 |
| Prescor 3/4 | 3.0 | 165 | 3/4" int. | 3/4" int. | 71 | 50 | 27025 |
| Prescor 3/4 | 4.0 | 200 | 3/4" int. | 3/4" int. | 71 | 50 | 27028 |
| Prescor 1 | 1.5 | 275 | 1" int. | 1 1/4" int. | 101 | 74 | 27042 |
| Prescor 1 | 2.0 | 320 | 1" int. | 1 1/4" int. | 101 | 74 | 27043 |
| Prescor 1 | 3.0 | 395 | 1" int. | 1 1/4" int. | 101 | 74 | 27045 |
| Prescor 1 | 3.5 | 445 | 1" int. | 1 1/4" int. | 101 | 74 | 27047 |
| Prescor 1 | 4.0 | 485 | 1" int. | 1 1/4" int. | 101 | 74 | 27040 |
| Prescor 1 | 5.0 | 580 | 1" int. | 1 1/4" int. | 101 | 74 | 27049 |
| Prescor 1 1/4 | 3.0 | 580 | 1 1/2" int. | 1 1/4" int. | 109 | 74 | 27056 |
| Prescor 1 1/4 | 4.0 | 710 | 1 1/2" int. | 1 1/4" int. | 109 | 74 | 27037 |
| Prescor 1 1/4 | 5.0 | 845 | 1 1/2" int. | 1 1/4" int. | 109 | 74 | 27039 |
| Prescor 1/2 | 2.5 | ≥ 50 | 1/2" int. | 3/4" int. | 61 | 51 | 27630 |
| Prescor 1/2 | 3.0 | ≥ 50 | 1/2" int. | 3/4" int. | 61 | 51 | 27634 |
| Prescor 3/4 | 3.0 | ≥ 100 | 3/4" int. | 1" int. | 77 | 56 | 27024 |
| Prescor 3/4 | 2.5 | ≥ 100 | 3/4" int. | 1" int. | 77 | 56 | 27020 |
| Prescor 1* | 2.5 | ≥ 200 | 1" int. | 1 1/4" int. | 101 | 74 | 27044 |
| Prescor 1* | 3.0 | ≥ 200 | 1" int. | 1 1/4" int. | 101 | 74 | 27048 |
| Prescor 1 1/4 | 2.5 | ≥ 350 | 1 1/4" int. | 1 1/2" int. | 109 | 74 | 27055 |
| Prescor 1 1/4 | 3.0 | ≥ 350 | 1 1/4" int. | 1 1/2" int. | 109 | 74 | 27057 |



Models and dimensions Prescor Solar safety valves

| Type | Set pressure in bar | Blow-off capacity in kW | Connections | | Dimensions in mm | | Code number |
|-------------------|---------------------|-------------------------|-------------|-------------|------------------|----|-------------|
| | | | A | B | C | D | |
| Prescor Solar 1/2 | 3.0 | 50 | 1/2" int. | 3/4" int. | 69 | 50 | 28310 |
| Prescor Solar 1/2 | 6.0 | 50 | 1/2" int. | 3/4" int. | 69 | 50 | 28311 |
| Prescor Solar 3/4 | 6.0 | 100 | 3/4" int. | 1" int. | 77 | 56 | 28316 |
| Prescor Solar 3/4 | 8.0 | 100 | 3/4" int. | 1" int. | 77 | 56 | 28317 |
| Prescor Solar 1 | 6.0 | 200 | 1" int. | 1 1/4" int. | 101 | 74 | 28321 |
| Prescor Solar 1 | 8.0 | 200 | 1" int. | 1 1/4" int. | 101 | 74 | 28322 |
| Prescor Solar 1 | 10.0 | 200 | 1" int. | 1 1/4" int. | 101 | 74 | 28323 |

Models Prescomano safety valves

| Type | Set pressure in bar | Blow-off capacity in kW | Connections | | Dimensions in mm | | Code number |
|----------------|---------------------|-------------------------|-------------|-----------|------------------|----|-------------|
| | | | A | B | C | D | |
| Prescomano 1/2 | 3.0 | 125 | 1/2" int. | 1/2" int. | 65 | 90 | 27683 |
| Prescomano 3/4 | 3.0 | 200 | 3/4" int. | 3/4" int. | 76 | 92 | 27090 |
| Prescomano 1/2 | 3.0 | 50 | 1/2" int. | 3/4" int. | 64 | 89 | 27686 |

Models Flopress safety valves

| Type | Blow-off pressure in bar | Blow-off capacity in kW | Connections | | Code number |
|----------------|--------------------------|-------------------------|-------------|--------|-------------|
| | | | A | B | |
| Flopress A 1/2 | 2.5 | 90 | 1/2" F | 1/2" F | 27006 |
| Flopress 1/2 | 3.0 | 110 | 3/4" F | 3/4" F | 27005 |
| Flopress 1/2 | 3.0 | 100 | 1/2" M | 3/4" F | 27015 |



Flamco

Prescor S safety valves and full-stroke safety valves with flanges

- ◆ Prescor S safety valves are suitable for sealed central heating systems with outputs of up to 1980 kW at 3.0 bar.
- ◆ Unnecessary use of the safety valve must be avoided as otherwise there is a greater risk that dirt will build up between the valve and its seat.
- ◆ Full-stroke safety valves with flanges are TRD approved.
- ◆ Full-stroke safety valves with flanges must also be fitted vertically, in accordance with local rules and regulations. Please state set-pressure when ordering (between 1,0 bar and 10,0 bar).

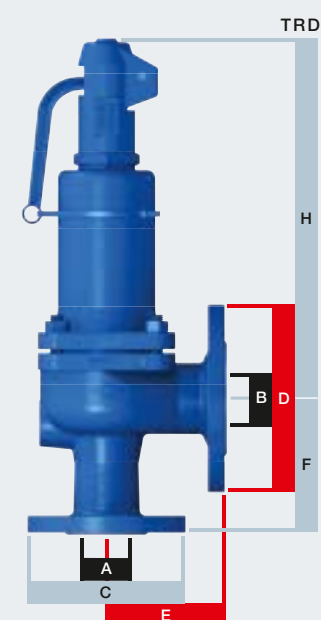
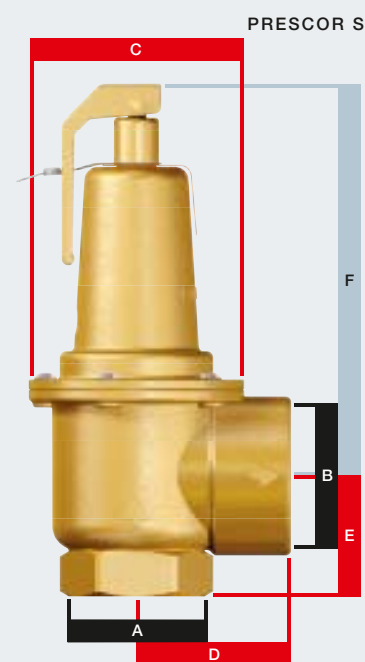


Models and dimensions Prescor S safety valves

| Type | Blow-off pressure in bar | Blow-off capacity in kW | Connections (internal thread) | | Dimensions in mm | | | | Code number |
|---------------------|--------------------------|-------------------------|-------------------------------|--------|------------------|-----|----|-----|-------------|
| | | | A | B | C | D | E | F | |
| Prescor S 700 1 1/4 | 2 | 600 | 1 1/4" | 1 1/2" | 96 | 58 | 48 | 166 | 29201 |
| Prescor S 700 1 1/4 | 2.5 | 704 | 1 1/4" | 1 1/2" | 96 | 58 | 48 | 166 | 29202 |
| Prescor S 700 1 1/4 | 3 | 810 | 1 1/4" | 1 1/2" | 96 | 58 | 48 | 166 | 29203 |
| Prescor S 700 1 1/4 | 3.5 | 911 | 1 1/4" | 1 1/2" | 96 | 58 | 48 | 166 | 29204 |
| Prescor S 700 1 1/4 | 4 | 1013 | 1 1/4" | 1 1/2" | 96 | 58 | 48 | 166 | 29205 |
| Prescor S 700 1 1/4 | 4.5 | 1117 | 1 1/4" | 1 1/2" | 96 | 58 | 48 | 166 | 29206 |
| Prescor S 700 1 1/4 | 5 | 1220 | 1 1/4" | 1 1/2" | 96 | 58 | 48 | 166 | 29207 |
| Prescor S 700 1 1/4 | 6 | 1426 | 1 1/4" | 1 1/2" | 96 | 58 | 48 | 166 | 29208 |
| Prescor S 700 1 1/4 | 7 | 1632 | 1 1/4" | 1 1/2" | 96 | 58 | 48 | 166 | 29209 |
| Prescor S 700 1 1/4 | 8 | 1839 | 1 1/4" | 1 1/2" | 96 | 58 | 48 | 166 | 29210 |
| Prescor S 700 1 1/4 | 10.0 | 2252 | 1 1/4" | 1 1/2" | 96 | 58 | 48 | 166 | 29211 |
| Prescor S 960 1 1/2 | 2 | 850 | 1 1/2" | 2" | 96 | 68 | 53 | 173 | 29221 |
| Prescor S 960 1 1/2 | 2.5 | 996 | 1 1/2" | 2" | 96 | 68 | 53 | 173 | 29222 |
| Prescor S 960 1 1/2 | 3 | 1120 | 1 1/2" | 2" | 96 | 68 | 53 | 173 | 29223 |
| Prescor S 960 1 1/2 | 3.5 | 1289 | 1 1/2" | 2" | 96 | 68 | 53 | 173 | 29224 |
| Prescor S 960 1 1/2 | 4 | 1435 | 1 1/2" | 2" | 96 | 68 | 53 | 173 | 29225 |
| Prescor S 960 1 1/2 | 4.5 | 1581 | 1 1/2" | 2" | 96 | 68 | 53 | 173 | 29226 |
| Prescor S 960 1 1/2 | 5 | 1727 | 1 1/2" | 2" | 96 | 68 | 53 | 173 | 29227 |
| Prescor S 960 1 1/2 | 6 | 2019 | 1 1/2" | 2" | 96 | 68 | 53 | 173 | 29228 |
| Prescor S 960 1 1/2 | 7 | 2312 | 1 1/2" | 2" | 96 | 68 | 53 | 173 | 29229 |
| Prescor S 960 1 1/2 | 8 | 2604 | 1 1/2" | 2" | 96 | 68 | 53 | 173 | 29230 |
| Prescor S 960 1 1/2 | 10.0 | 3188 | 1 1/2" | 2" | 96 | 68 | 53 | 173 | 29231 |
| Prescor S 1700 2 | 2 | 1491 | 2" | 2 1/2" | 129 | 101 | 76 | 217 | 29241 |
| Prescor S 1700 2 | 2.5 | 1747 | 2" | 2 1/2" | 129 | 101 | 76 | 217 | 29242 |
| Prescor S 1700 2 | 3 | 1980 | 2" | 2 1/2" | 129 | 101 | 76 | 217 | 29243 |
| Prescor S 1700 2 | 3.5 | 2259 | 2" | 2 1/2" | 129 | 101 | 76 | 217 | 29244 |
| Prescor S 1700 2 | 4 | 2515 | 2" | 2 1/2" | 129 | 101 | 76 | 217 | 29245 |
| Prescor S 1700 2 | 4.5 | 2772 | 2" | 2 1/2" | 129 | 101 | 76 | 217 | 29246 |
| Prescor S 1700 2 | 5 | 3028 | 2" | 2 1/2" | 129 | 101 | 76 | 217 | 29247 |
| Prescor S 1700 2 | 6 | 3540 | 2" | 2 1/2" | 129 | 101 | 76 | 217 | 29248 |
| Prescor S 1700 2 | 7 | 4053 | 2" | 2 1/2" | 129 | 101 | 76 | 217 | 29249 |
| Prescor S 1700 2 | 8 | 4565 | 2" | 2 1/2" | 129 | 101 | 76 | 217 | 29250 |
| Prescor S 1700 2 | 10.0 | 5590 | 2" | 2 1/2" | 129 | 101 | 76 | 217 | 29251 |

Models and dimensions safety valves with flanges

| Type | Nominal diameter DN | | Dimensions in mm | | | | | Free space above cap | Weight | Code number |
|------------------------------|---------------------|--------------------|------------------|----------|-----|-----|-----|----------------------|--------|-------------|
| | Inlet flange A | Discharge flange B | Flange C | Flange D | E | F | H | X in mm | in kg | |
| Full-stroke safety valve 20 | 20 | 32 | 105 | 140 | 85 | 95 | 270 | 150 | 8.5 | 27080 |
| Full-stroke safety valve 25 | 25 | 40 | 115 | 150 | 100 | 105 | 280 | 150 | 9.5 | 27081 |
| Full-stroke safety valve 32 | 32 | 50 | 140 | 165 | 110 | 115 | 330 | 200 | 13.5 | 27082 |
| Full-stroke safety valve 40 | 40 | 65 | 150 | 185 | 115 | 140 | 390 | 250 | 20 | 27083 |
| Full-stroke safety valve 50 | 50 | 80 | 165 | 200 | 120 | 150 | 435 | 300 | 26 | 27084 |
| Full-stroke safety valve 65 | 65 | 100 | 185 | 220 | 140 | 170 | 545 | 350 | 39 | 27085 |
| Full-stroke safety valve 80 | 80 | 125 | 200 | 250 | 160 | 195 | 610 | 400 | 53 | 27086 |
| Full-stroke safety valve 100 | 100 | 150 | 220 | 285 | 180 | 220 | 690 | 500 | 82 | 27087 |
| Full-stroke safety valve 125 | 125 | 200 | 250 | 340 | 200 | 250 | 845 | 500 | 125 | 27088 |





Manofiller, Flamco pressure-reducing valves and (thermo)pressure gauges



- ◆ Because of its radiator coupling, the Manofiller can be connected directly to existing radiator connections.
- ◆ Flexcon pressure gauges must be mounted using a suitable Allen key. In the case of the Flexcon thermo-pressure gauge, a hexagonal key is needed.
- ◆ Flexcon Ø 80 pressure gauges and Flexcon thermo-pressure gauges may be fitted and changed without draining the system, due to the shut-off valve.
- ◆ Flamco pressure-reducing valves are compact with excellent performance. They utilise the proven bladder principle of pressure regulation. Complete with an integral serviceable strainer.

Model and dimension Manofiller filling group

| Type | A | Connections B | Code number |
|------------|-----------|---------------|-------------|
| Manofiller | 1/2" ext. | Ø 15 mm | 27097 |

Models and dimensions Flexcon pressure gauges

| Type | Connections | | Dimensions in mm | | | Code number |
|---------------------------|-------------|--------|------------------|----|-----|-------------|
| | A | B | C | D | E | |
| Pressure gauge Ø 63 rad. | G 3/8" | | Ø 63 | 28 | 87 | 27200 |
| Pressure gauge Ø 63 rad. | G 1/4" | | Ø 63 | 28 | 87 | 27205 |
| Pressure gauge Ø 63 ax. | G 1/4" | | Ø 63 | 51 | | 27210 |
| Pressure gauge Ø 80 rad.* | R 1/2" | G 1/4" | Ø 80 | 32 | 121 | 27220 |
| Pressure gauge Ø 80 ax.* | R 1/2" | G 1/4" | Ø 80 | 78 | | 27230 |

* With shut-off valve.

Model and dimensions Flexcon thermo-pressure gauge

| Type | Connection A | C | Dimensions in mm D | Code number |
|---------------------------------|--------------|------|--------------------|-------------|
| Thermo-pressure gauge Ø 80 ax.* | R 1/2" | Ø 84 | 78 | 27250 |

* With shut-off valve.

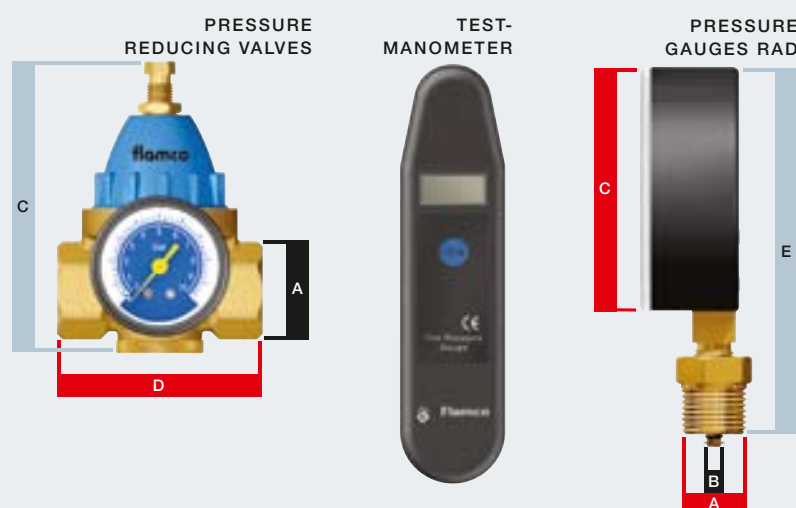
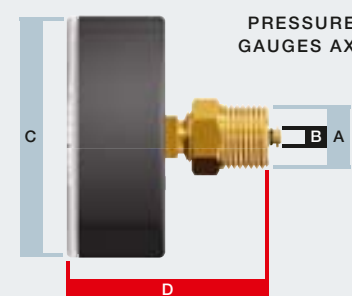
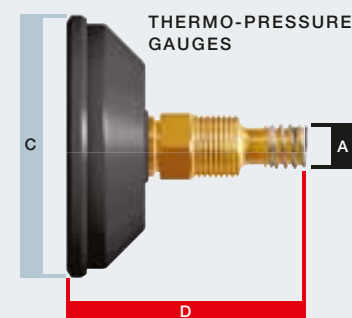
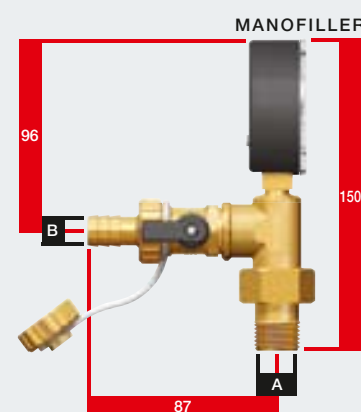
Model testmanometer

| Type | Pressure reducing | Code number |
|---------------|-------------------|-------------|
| Testmanometer | 0.4 – 6.8 bar | 27907 |

Models and dimensions Flexcon pressure reducing valves

| Type | Connections A | Dimensions in mm C | D | Max. pressure bar | Code number |
|---------------------|---------------|--------------------|-----|-------------------|-------------|
| 1/2 PR with gauge | 1/2" F | 100 | 65 | 16 | 17441 |
| 3/4 PR with gauge | 1/4" F | 105 | 75 | 16 | 17442 |
| 1 PR with gauge | 1" F | 130 | 100 | 16 | 17443 |
| 1 1/4 PR with gauge | 1 1/4" F | 160 | 190 | - | 17444 |
| 1 1/2 PR with gauge | 1 1/2" F | 220 | 220 | - | 17445 |
| 2 PR with gauge | 2" F | 220 | 250 | - | 17446 |

* With shut-off valve.





Flamco

FlexBalance hydraulic separators

- ◆ For rectifying the hydraulic imbalance in heating and cooling systems comprising several circuits and pumps.
 - ◆ FlexBalance hydraulic separators are supplied as standard with an automatic de-aerator.
 - ◆ Maximum working pressure 10 bar. Maximum operating temperature 120 °C.
 - ◆ FlexBalance DN 150 and above are fitted as standard with feet.
 - ◆ FlexBalance hydraulic separators are fitted internally only with a perforated sheet.
- FlexBalance F with flange connection, FlexBalance R with threaded pipe connection and FlexBalance S with welding connection.



Types and dimensions FlexBalance F

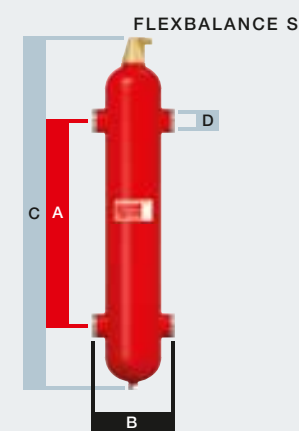
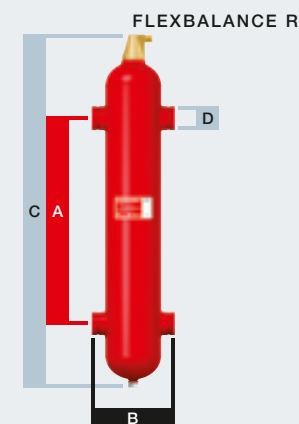
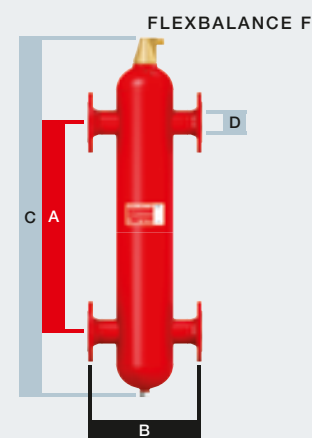
| Type | Content in litres | Dimensions in mm | | | Connection | | Flow in the system (m³/h) | Capacity of the system (kW) | Weight in kg | Code-number |
|-------------------|-------------------|------------------|------|------|------------|-------|---------------------------|-----------------------------|--------------|-------------|
| | | A | B | C | DN | Ø D | | | | |
| FlexBalance F 50 | 17 | 490 | 350 | 900 | 50 | 60,3 | 5-15 | 100-200 | 25 | 28441 |
| FlexBalance F 65 | 21 | 635 | 350 | 1045 | 65 | 76,1 | 10-17 | 180-330 | 28 | 28442 |
| FlexBalance F 80 | 65 | 745 | 470 | 1340 | 80 | 88,9 | 15-30 | 300-450 | 40 | 28443 |
| FlexBalance F 100 | 78 | 965 | 470 | 1585 | 100 | 114,3 | 25-55 | 400-770 | 51 | 28444 |
| FlexBalance F 125 | 181 | 1180 | 635 | 2065 | 125 | 139,7 | 35-80 | 700-1150 | 97 | 28445 |
| FlexBalance F 150 | 336 | 1430 | 774 | 2585 | 150 | 168,3 | 55-120 | 1000-1700 | 180 | 28446 |
| FlexBalance F 200 | 800 | 1860 | 1000 | 3355 | 200 | 219,1 | 90-200 | 1500-2800 | 295 | 28447 |
| FlexBalance F 250 | 1787 | 2340 | 1220 | 4136 | 250 | 273,0 | 110-350 | 2500-4500 | 545 | 28448 |
| FlexBalance F 300 | 2008 | 2790 | 1220 | 4586 | 300 | 323,9 | 150-500 | 4200-6400 | 701 | 28449 |
| FlexBalance F 350 | 3712 | 3060 | 1580 | 5360 | 350 | 355,6 | 200-600 | 6000-7700 | 1102 | 28450 |
| FlexBalance F 400 | 6130 | 3500 | 1870 | 6115 | 400 | 406,4 | 250-800 | 7000-10000 | 1640 | 28452 |

Types and dimensions FlexBalance R

| Type | Content in litres | Dimensions in mm | | | Connection | | Flow in the system (m³/h) | Capacity of the system (kW) | Weight in kg | Code-number |
|-------------------|-------------------|------------------|-----|------|------------|-------|---------------------------|-----------------------------|--------------|-------------|
| | | A | B | C | DN | Ø D | | | | |
| FlexBalance R 50 | 17 | 490 | 260 | 900 | 50 | 60,3 | 5-15 | 100-200 | 15 | 28370 |
| FlexBalance R 65 | 21 | 635 | 260 | 1045 | 65 | 76,1 | 10-17 | 180-330 | 16 | 28371 |
| FlexBalance R 80 | 65 | 745 | 370 | 1340 | 80 | 88,9 | 15-30 | 300-450 | 25 | 28372 |
| FlexBalance R 100 | 78 | 965 | 366 | 1585 | 100 | 114,3 | 25-55 | 400-770 | 33 | 28373 |
| FlexBalance R 125 | 181 | 1180 | 525 | 2065 | 125 | 139,7 | 35-80 | 700-1150 | 72 | 28374 |
| FlexBalance R 150 | 336 | 1430 | 664 | 2585 | 150 | 168,3 | 55-120 | 1000-1700 | 149 | 28375 |
| FlexBalance R 200 | 800 | 1860 | 876 | 3355 | 200 | 219,1 | 90-200 | 1500-2800 | 251 | 28376 |

Types and dimensions FlexBalance S

| Type | Content in litres | Dimensions in mm | | | Connection | | Flow in the system (m³/h) | Capacity of the system (kW) | Weight in kg | Code-number |
|-------------------|-------------------|------------------|------|------|------------|-------|---------------------------|-----------------------------|--------------|-------------|
| | | A | B | C | DN | Ø D | | | | |
| FlexBalance S 50 | 17 | 490 | 260 | 900 | 50 | 60,3 | 5-15 | 100-200 | 15 | 28431 |
| FlexBalance S 65 | 21 | 635 | 260 | 1045 | 65 | 76,1 | 10-17 | 180-330 | 16 | 28432 |
| FlexBalance S 80 | 65 | 745 | 370 | 1340 | 80 | 88,9 | 15-30 | 300-450 | 25 | 28433 |
| FlexBalance S 100 | 78 | 965 | 366 | 1585 | 100 | 114,3 | 25-55 | 400-770 | 33 | 28434 |
| FlexBalance S 125 | 181 | 1180 | 525 | 2065 | 125 | 139,7 | 35-80 | 700-1150 | 72 | 28435 |
| FlexBalance S 150 | 336 | 1430 | 664 | 2585 | 150 | 168,3 | 55-120 | 1000-1700 | 149 | 28436 |
| FlexBalance S 200 | 800 | 1860 | 876 | 3355 | 200 | 219,1 | 90-200 | 1500-2800 | 251 | 28437 |
| FlexBalance S 250 | 1787 | 2340 | 1080 | 4136 | 250 | 273,0 | 110-350 | 2500-4500 | 483 | 28438 |
| FlexBalance S 300 | 2008 | 2790 | 1064 | 4586 | 300 | 323,9 | 150-500 | 4200-6400 | 613 | 28439 |
| FlexBalance S 350 | 3712 | 3060 | 1416 | 5360 | 350 | 355,6 | 200-600 | 6000-7700 | 975 | 28440 |
| FlexBalance S 400 | 6130 | 3500 | 1700 | 6115 | 400 | 406,4 | 250-800 | 7000-10000 | 1490 | 284151 |





- ◆ For rectifying the hydraulic imbalance in heating and cooling systems comprising several circuits and pumps.
- ◆ FlexBalance Plus hydraulic separators are supplied as standard with an automatic de-aerator and a dirt drainage tap.
- ◆ Maximum working pressure 10 bar. Maximum operating temperature 120 °C.
- ◆ FlexBalance Plus DN 150 and above are fitted as standard with feet.
- ◆ FlexBalance Plus hydraulic separators are fitted with two baskets with PALL rings for the separation of air and dirt. The patented use of PALL rings ensures maximum efficiency as described in independent reports by TU Delft and TNO.
- ◆ FlexBalance Plus F with flange connection, FlexBalance Plus R with threaded pipe connection and FlexBalance Plus S with welding connection.

Types and dimensions FlexBalance Plus F

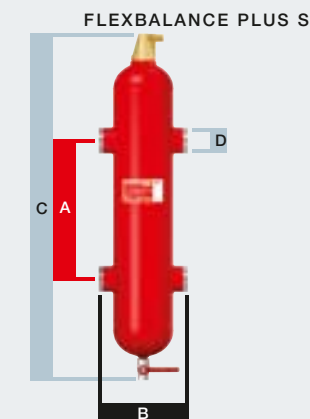
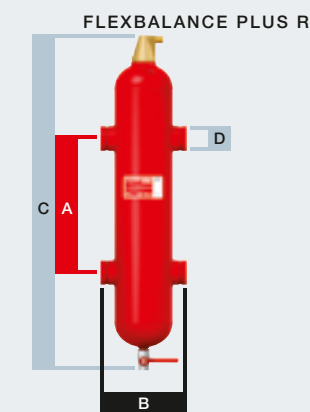
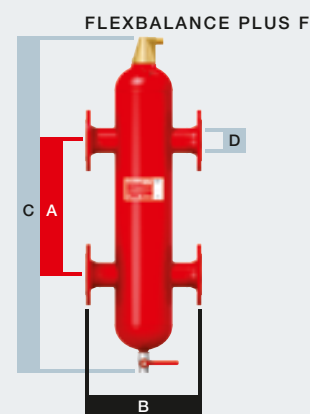
| Type | Content in litres | Dimensions in mm | | | Connection | | Flow in the system (m³/h) | Capacity of the system (kW) | Weight in kg | Code-number |
|------------------------|-------------------|------------------|------|------|------------|-------|---------------------------|-----------------------------|--------------|-------------|
| | | A | B | C | DN | Ø D | | | | |
| FlexBalance Plus F 50 | 17,5 | 400 | 350 | 950 | 50 | 60,3 | 5-15 | 100-200 | 28 | 28480 |
| FlexBalance Plus F 65 | 17,5 | 400 | 350 | 950 | 65 | 76,1 | 10-17 | 180-330 | 30 | 28481 |
| FlexBalance Plus F 80 | 67 | 625 | 470 | 1265 | 80 | 88,9 | 15-30 | 300-450 | 50 | 28482 |
| FlexBalance Plus F 100 | 67 | 625 | 470 | 1265 | 100 | 114,3 | 25-55 | 400-770 | 55 | 28483 |
| FlexBalance Plus F 125 | 171 | 830 | 635 | 1767 | 125 | 139,7 | 35-80 | 700-1150 | 109 | 28484 |
| FlexBalance Plus F 150 | 322 | 1040 | 774 | 2175 | 150 | 168,3 | 55-120 | 1000-1700 | 197 | 28485 |
| FlexBalance Plus F 200 | 781 | 1400 | 1000 | 2895 | 200 | 219,1 | 90-200 | 1500-2800 | 342 | 28486 |
| FlexBalance Plus F 250 | 1792 | 1850 | 1220 | 3646 | 250 | 273,0 | 110-350 | 2500-4500 | 657 | 28487 |
| FlexBalance Plus F 300 | 1792 | 1850 | 1220 | 3646 | 300 | 323,9 | 150-500 | 4200-6400 | 752 | 28488 |
| FlexBalance Plus F 350 | 3685 | 2325 | 1580 | 4525 | 350 | 355,6 | 200-600 | 6000-7700 | 1303 | 28489 |
| FlexBalance Plus F 400 | 6130 | 2700 | 1870 | 5115 | 400 | 406,4 | 250-800 | 7000-10000 | 1968 | 28490 |

Types and dimensions FlexBalance Plus R

| Type | Content in litres | Dimensions in mm | | | Connection | | Flow in the system (m³/h) | Capacity of the system (kW) | Weight in kg | Code-number |
|------------------------|-------------------|------------------|-----|------|------------|-------|---------------------------|-----------------------------|--------------|-------------|
| | | A | B | C | DN | Ø D | | | | |
| FlexBalance Plus R 50 | 17,5 | 400 | 260 | 950 | 50 | 60,3 | 5-15 | 100-200 | 18 | 28390 |
| FlexBalance Plus R 65 | 17,5 | 400 | 260 | 950 | 65 | 76,1 | 10-17 | 180-330 | 18 | 28391 |
| FlexBalance Plus R 80 | 67 | 625 | 370 | 1265 | 80 | 88,9 | 15-30 | 300-450 | 35 | 28392 |
| FlexBalance Plus R 100 | 67 | 625 | 366 | 1265 | 100 | 114,3 | 25-55 | 400-770 | 37 | 28393 |
| FlexBalance Plus R 120 | 171 | 830 | 525 | 1767 | 125 | 139,7 | 35-80 | 700-1150 | 79 | 28394 |
| FlexBalance Plus R 150 | 322 | 1040 | 664 | 2175 | 150 | 168,3 | 55-120 | 1000-1700 | 166 | 28395 |
| FlexBalance Plus R 200 | 781 | 1400 | 876 | 2895 | 200 | 219,1 | 90-200 | 1500-2800 | 297 | 28396 |

Types and dimensions FlexBalance Plus S

| Type | Content in litres | Dimensions in mm | | | Connection | | Flow in the system (m³/h) | Capacity of the system (kW) | Weight in kg | Code-number |
|------------------------|-------------------|------------------|------|------|------------|-------|---------------------------|-----------------------------|--------------|-------------|
| | | A | B | C | DN | Ø D | | | | |
| FlexBalance Plus S 50 | 17,5 | 400 | 260 | 950 | 50 | 60,3 | 5-15 | 100-200 | 18 | 28460 |
| FlexBalance Plus S 65 | 17,5 | 400 | 260 | 950 | 65 | 76,1 | 10-17 | 180-330 | 18 | 28461 |
| FlexBalance Plus S 80 | 67 | 625 | 370 | 1265 | 80 | 88,9 | 15-30 | 300-450 | 35 | 28462 |
| FlexBalance Plus S 100 | 67 | 625 | 366 | 1265 | 100 | 114,3 | 25-55 | 400-770 | 37 | 28463 |
| FlexBalance Plus S 125 | 171 | 830 | 525 | 1767 | 125 | 139,7 | 35-80 | 700-1150 | 79 | 28464 |
| FlexBalance Plus S 150 | 322 | 1040 | 664 | 2175 | 150 | 168,3 | 55-120 | 1000-1700 | 166 | 28465 |
| FlexBalance Plus S 200 | 781 | 1400 | 875 | 2895 | 200 | 219,1 | 90-200 | 1500-2800 | 297 | 28466 |
| FlexBalance Plus S 250 | 1792 | 1850 | 1080 | 3646 | 250 | 273,0 | 110-350 | 2500-4500 | 592 | 28467 |
| FlexBalance Plus S 300 | 1792 | 1850 | 1064 | 3646 | 300 | 323,9 | 150-500 | 4200-6400 | 667 | 28468 |
| FlexBalance Plus S 350 | 3685 | 2325 | 1416 | 4525 | 350 | 355,6 | 200-600 | 6000-7700 | 1188 | 28469 |
| FlexBalance Plus S 400 | 6130 | 2700 | 1700 | 5115 | 400 | 406,4 | 250-800 | 7000-10000 | 1823 | 28470 |





Flamco



Flexfast isolating union, Flexcon connection sets, FlexControl and funnels

- ◆ For simple and efficient inspection or changing of a Flexcon tank, without having to release the system pressure or drain the system.
- ◆ The underside and top of the Flexfast isolating union must be fitted with the correct tools. Then, both Flexfast component parts must be screwed together hand-tight.
- ◆ The Flexcon 1/2" connection set may be used in systems with a capacity of up to 660 kW.
- ◆ For the Flexcon 1" connection set, the maximum capacity of the system can be up to 2355 kW.
- ◆ The Flamco 1/2" and 3/4" funnels are made of brass. The Flamco 1 1/4" and 1 1/2" funnels are made of cast iron.

Model and dimensions Flexfast isolating union

| Type | Connections | | Dimensions in mm | Code number |
|---------------|-------------|-----------|------------------|-------------|
| | A | B | C | |
| Flexfast 3/4" | 3/4" ext. | 3/4" int. | 68 | 27920 |

Models and dimensions Flexcon connection sets

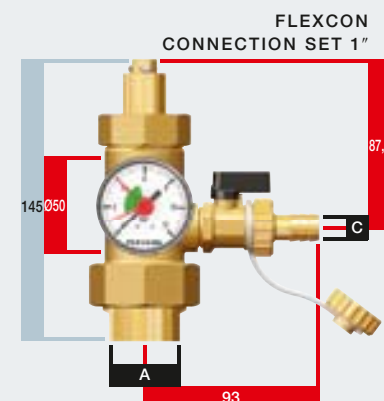
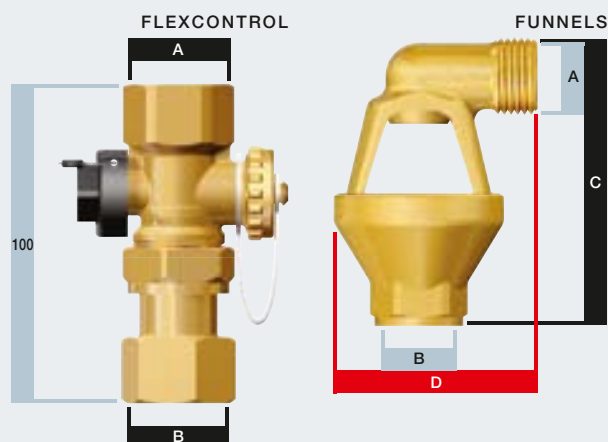
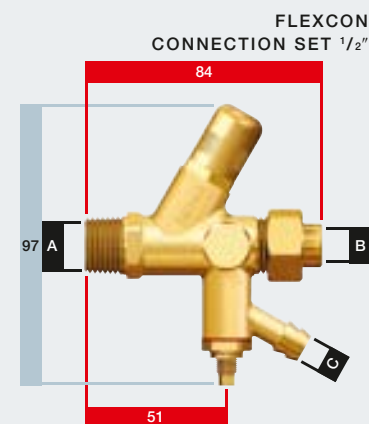
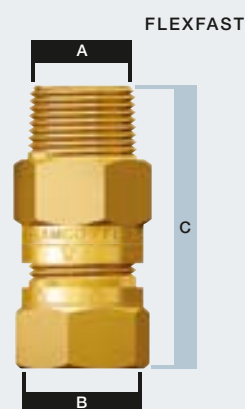
| Type | A | Connections | C | Code number |
|-----------------------------|-----------|-----------------|---------|-------------|
| | | B | | |
| 1/2" with pressure gauge | 1/2" ext. | 12 mm-1/2" ext. | Ø 13 mm | 27920 |
| 1/2" without pressure gauge | 1/2" ext. | 12 mm-1/2" ext. | Ø 13 mm | 27900 |
| 1" with pressure gauge | 1" int. | 1" int. | Ø 15 mm | 27293 |

Model and dimensions FlexControl

| Type | Connections | | Code number |
|------------------|-------------|-----------|-------------|
| | A | B | |
| FlexControl 3/4" | 3/4" int. | 3/4" ext. | 28920 |

Models and dimensions Flamco funnel

| Type | Connections | | Dimensions in mm | | Code number |
|---------------|-------------|----------|------------------|-----|-------------|
| | A (ext.) | B (int.) | C | D | |
| Funnel 1/2" | 1/2" | 1/2" | 80 | 55 | 27350 |
| Funnel 3/4" | 3/4" | 1" | 94 | 76 | 27360 |
| Funnel 1" | 1" | 1 1/2" | 185 | 95 | 27325 |
| Funnel 1 1/4" | 1 1/4" | 1 1/2" | 195 | 100 | 27330 |
| Funnel 1 1/2" | 1 1/2" | 1 1/2" | 205 | 105 | 27340 |





Flexconsole, DT disassembly tool, Flexcon MB 2, pressure safety, WMS 800, connection set and Flexcon GVA

- ◆ By screwing in the wingnut, the Flexcon DT disassembly tool attaches itself to the Flexcon tank clamp ring. Then all you need to do is move the tank to the side.
- ◆ The Flexconsole and Flexconsole Plus are used for simply and quickly fitting and connecting Flexcon expansion tanks with capacities of up to 25 litres.
- ◆ The WMS 800 low-water-level protection prevents the boiler from boiling dry. At regular intervals, a professional must inspect the system and its function using the test button.

Models and dimensions Flexconsole

| Type | Connections | | Dimensions in mm | | Code number |
|--------------------------------------|-------------|----------|------------------|-----|-------------|
| | A (ext.) | B (int.) | C | D | |
| Flexconsole 3/4" | 1/2" | 3/4" | 195 | 275 | 27910 |
| Flexconsole Plus | 1/2" | 3/4" | 195 | 275 | 28989 |
| Flexconsole Plus without accessories | 3/4" | 3/4" | 195 | 275 | 27996 |

Model and dimension Flexcon DT

| Type | Dimensions in mm A | Code number |
|------------|-----------------------|-------------|
| Flexcon DT | 350 | 27925 |

Model and dimensions Flexcon MB 2

| Type | Suitable for | A | Dimensions in mm B | C | Code number |
|-----------------------------|-------------------------|----|-----------------------|----|-------------|
| Flexcon vessel support MB 2 | Flexcon / Airfix 8 - 25 | 94 | 110 | 26 | 27913 |

Model Flamco pressure safety

| Type | Connection A | Code number |
|------------------------------|-----------------|-------------|
| Minimum pressure safety 1/2" | 1/2" | 27459 |
| Maximum pressure safety 1/2" | 1/2" | 27458 |

Model and dimensions Flamco WMS 800

| Type | Connections | | Dimensions in mm | | | | Code number |
|---------|-----------------|-----------------|------------------|----|----|-----|-------------|
| | A | B | C | D | E | F | |
| WMS 800 | 27 mm / 1" ext. | 27 mm / 1" ext. | 358 | 62 | 85 | 195 | 27913 |

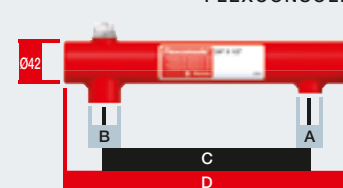
Model connection set

| Type | Connections | Suitable for Flexcon | Codenummer |
|---------------------|-------------|----------------------|------------|
| Connection set 3/4" | 3/4" int. | 35 - 50 | 27941 |
| Connection set 1" | 1" int. | 80 - 200 | 27942 |

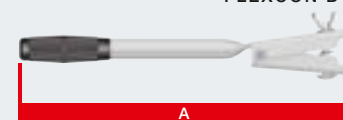
Model Flexcon GVA

| Type | Vessel | Connection | Exit | Code number |
|-------------|-----------|------------|-----------|-------------|
| Flexcon GVA | Vg 8 int. | | Vg 8 ext. | 27952 |

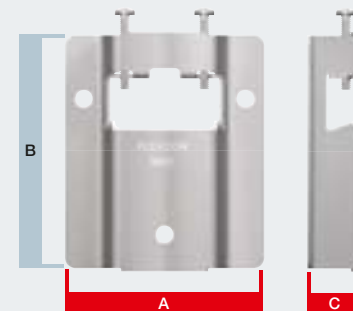
FLEXCONSOLE



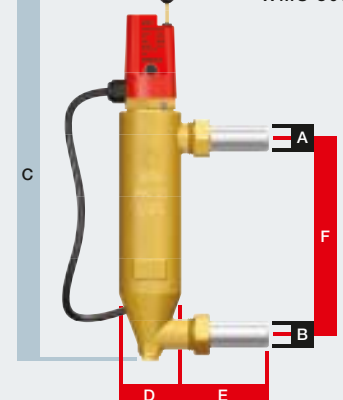
FLEXCON DT



MB 2



WMS 800



FLEXCON GVA

PRESSURE LIMITER



CONNECTION SET



PRESCOR



PRESCOR S



FLEXBALANCE



FLEXFAST



FLEXCONSOLE

HEATING SYSTEM ACCESSORIES

| ◆ TABLE OF CONTENTS | PAGE |
|---|-----------|
| ◆ A complete range of safety valves | 3.2/3.3 |
| ◆ You can trust our advanced technology | 3.4/3.5 |
| ◆ FlexBalance | 3.6/3.7 |
| ◆ (Thermo)pressure gauges filling/safety assemblies | 3.8/3.9 |
| ◆ Quick fixing and releasing | 3.10/3.11 |
| ◆ Funnels and miscellaneous items | 3.12 |
| ◆ Tables | 3.13/3.19 |



On the Flamco CD you will find all available information of the Flamco products.

Copyright Flamco b.v., Gouda, Holland. No part of this publication may be reproduced or published in any way without explicit mention of the source. The data listed are solely applicable to Flamco products. Flamco b.v. shall accept no liability whatsoever for incorrect use, application or interpretation of the technical information. Flamco b.v. reserves the right to make technical alterations.

Flamco b.v. refers you further to its international sales and delivery conditions as drawn up by Orgalime.



Flamco

Flamco b.v.

P.O. Box 115

2800 AC Gouda - Holland

Industriestraat 6

2802 AC Gouda - Holland

Telephone: (+ 31) 182 591800

Fax: (+ 31) 182 522557

info@flamco.nl

www.flamcogroup.com